



## FOLLOW THESE HELPFUL TIPS TO ENSURE YOUR MATERIALS ARE RECYCLED

- ✓ Clean & Empty Materials    ✓ Avoid Bagging Materials    ✓ Replace Caps & Lids

### RECYCLABLE MATERIALS



#### PAPER

CARDBOARD (FLATTENED)  
OFFICE PAPER | NEWSPAPER  
MAGAZINES | PAPER CUPS



#### METAL

STEEL & ALUMINUM CANS  
CONTAINERS | FOIL



#### PLASTIC

HARD OR RIGID CONTAINERS  
BOTTLES | TUBS | JUGS | JARS



#### GLASS

BOTTLES | JARS



#### CARTONS

### NOT RECYCLABLE



#### SOFT PLASTIC

BAGS | WRAPPERS  
FILM | PACKING FILLERS



#### TANGLERS

CORDS | HANGERS | WIRE  
HOSES | ROPES | CHAINS  
STRING LIGHTS



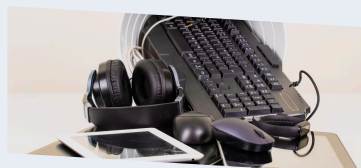
#### SHREDDDED ITEMS

PAPER | CARDBOARD | CUPS



#### FOAM PLASTIC

POLYSTYRENE | STYROFOAM



#### BIG ITEMS

ELECTRONICS | WOOD  
PROPANE TANKS  
SCRAP METAL | YARD WASTE



#### BATTERIES

LEAD ACID | LITHIUM  
NICAD | SUMP PUMP  
AUTOMOTIVE



#### FOOD WASTE

SCRAPS | LIQUID | LEFTOVERS



#### CLOTHING

TEXTILES | SHOES

These Guidelines represent the common items accepted in most recycling programs.

For more information  
visit [LRSrecycles.com](http://LRSrecycles.com)

